

# Caring for the Depressed Elderly in the Emergency Department: Establishing Linkages Between Sub-acute, Primary and Community Care

A St. Vincent's Health  
Research Project

Funded by *Beyondblue*



ST VINCENT'S  
HEALTH

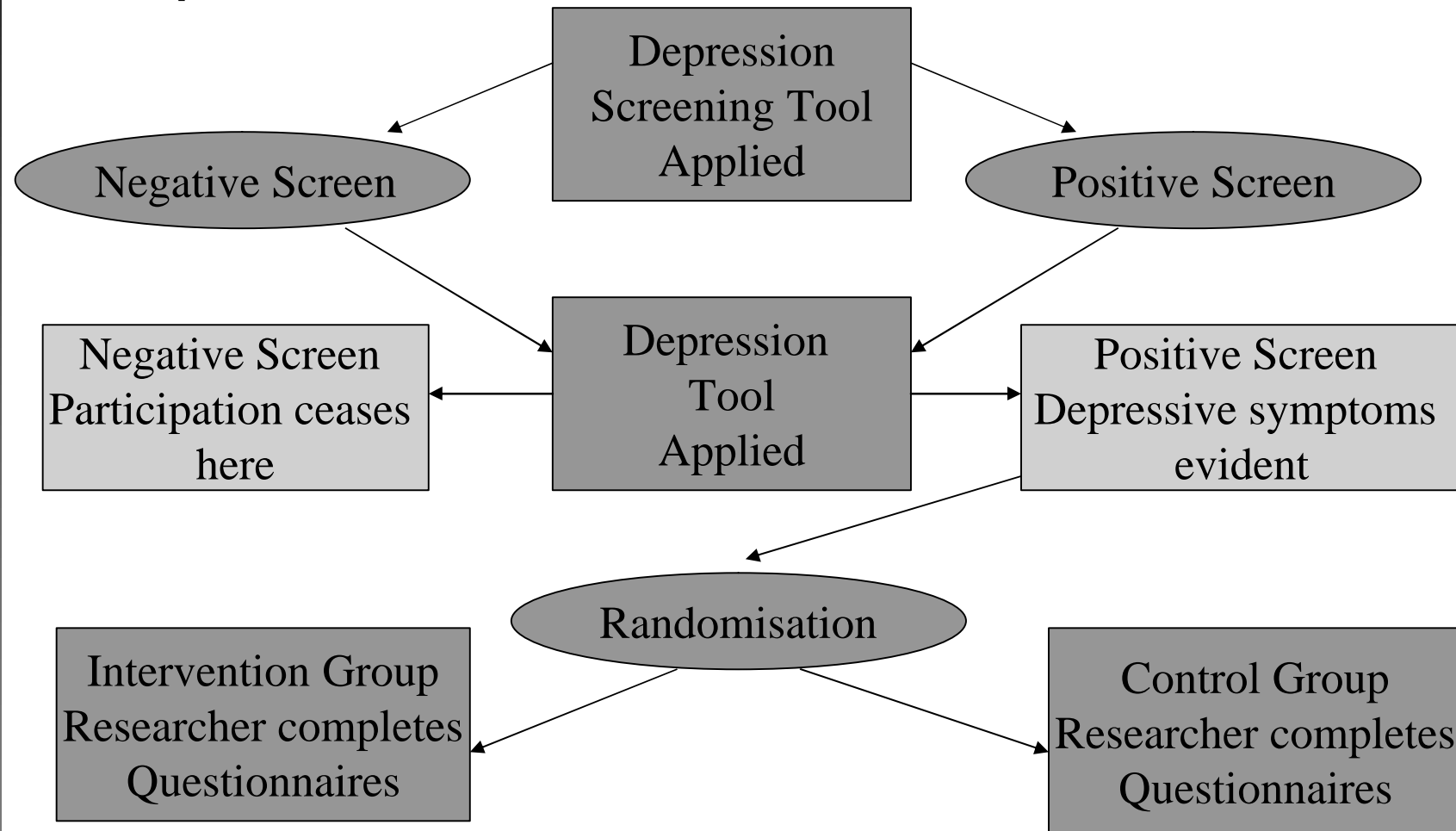


beyondblue  
the national depression initiative

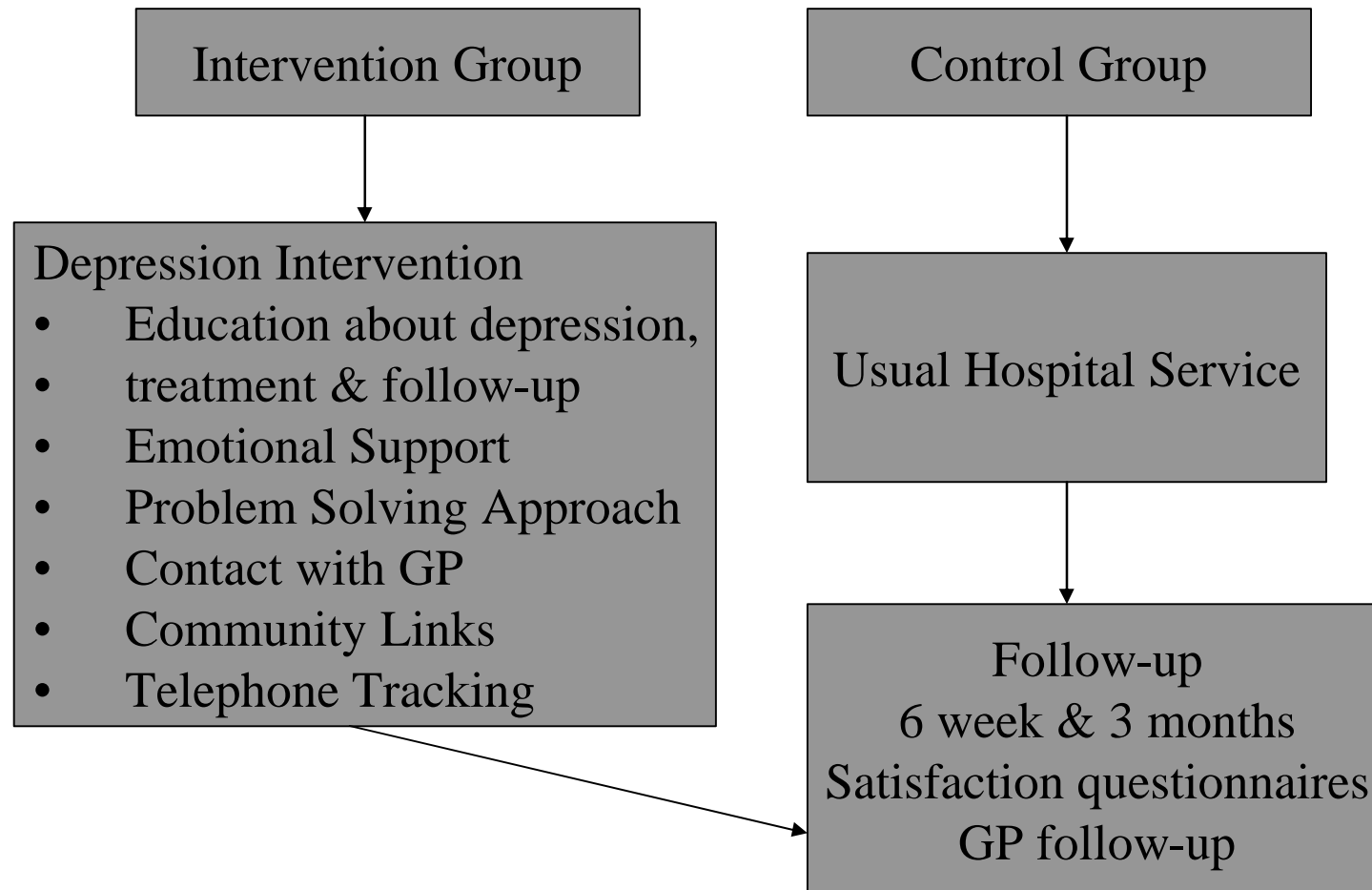
## Aims & Objectives

- To introduce a depression screening tool into the emergency department
- Develop a protocol for the management of depression in the elderly
- Contribute to evidence and knowledge about the appropriate care of the depressed elderly

# Research Process in Emergency Department



# Research Depression Intervention Model



## Initial Observations

- ED is a challenging environment for this type of recruitment
- Frequent ED attenders
- Multiple medical problems
- Reactive type of depression
- Non-compliance with some aspects of interventions (e.g. not attending geriatrician / GP appointments etc)