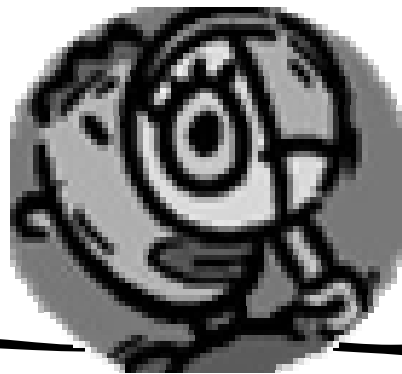


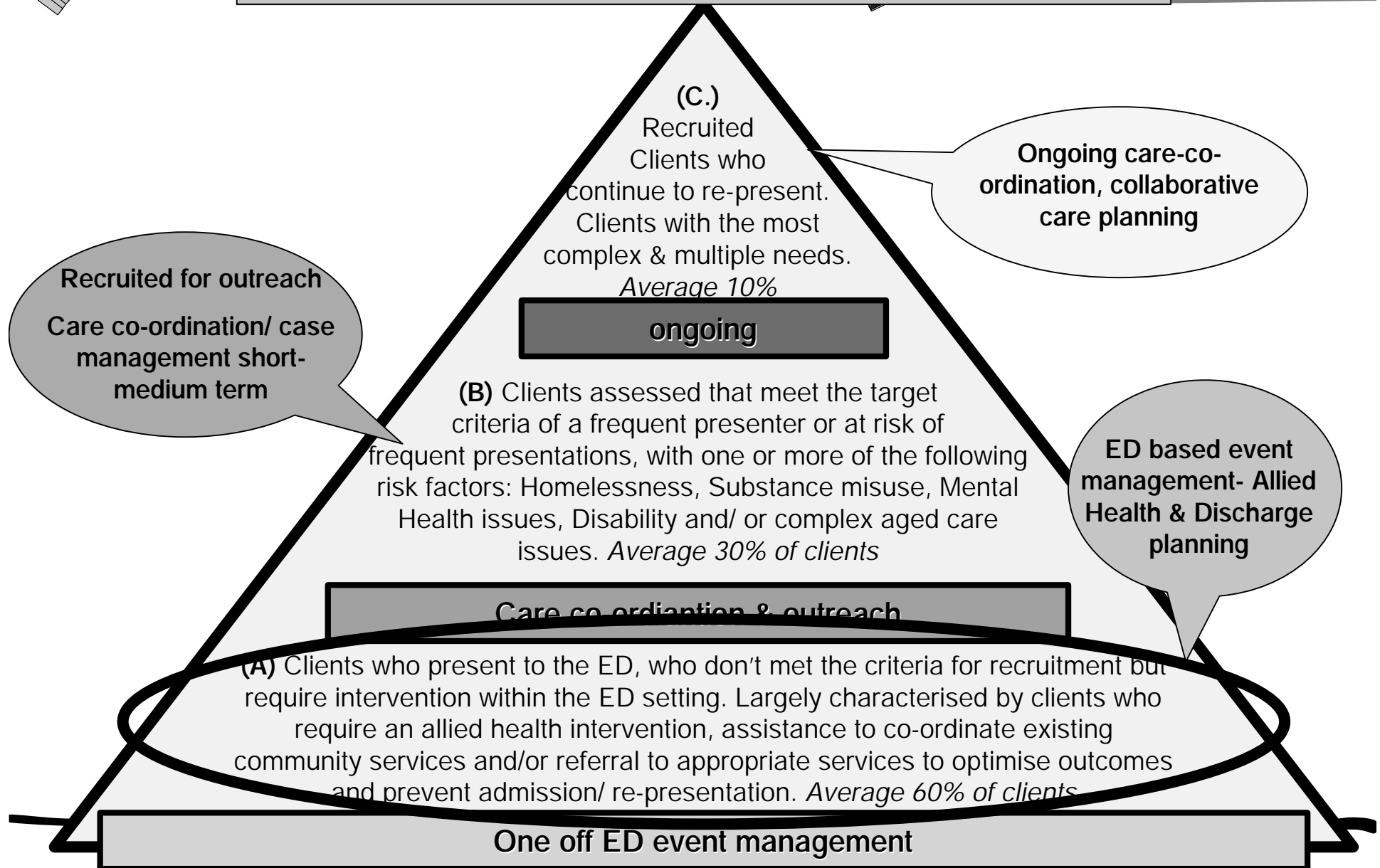


ALERT/HiT 2001-2005

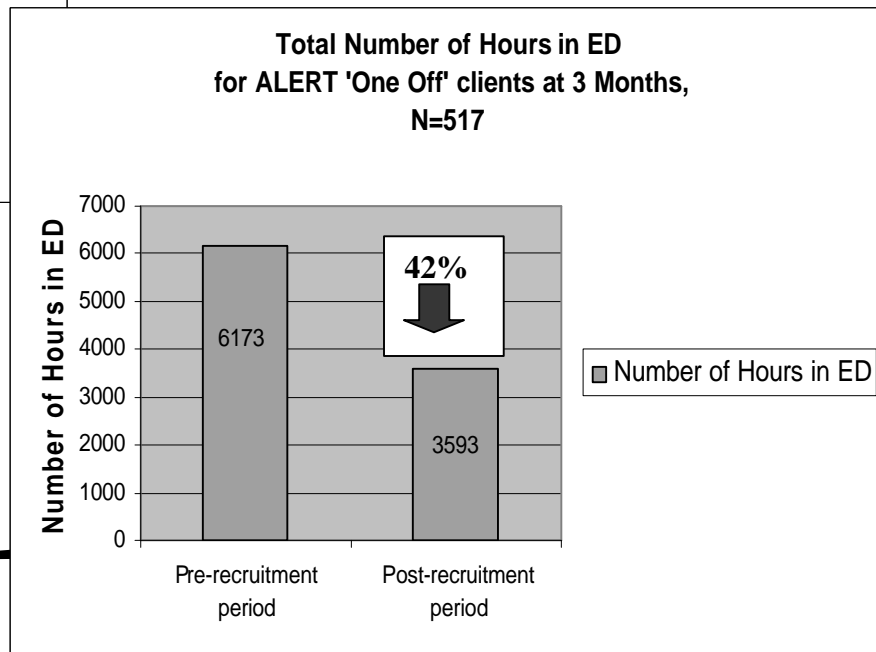
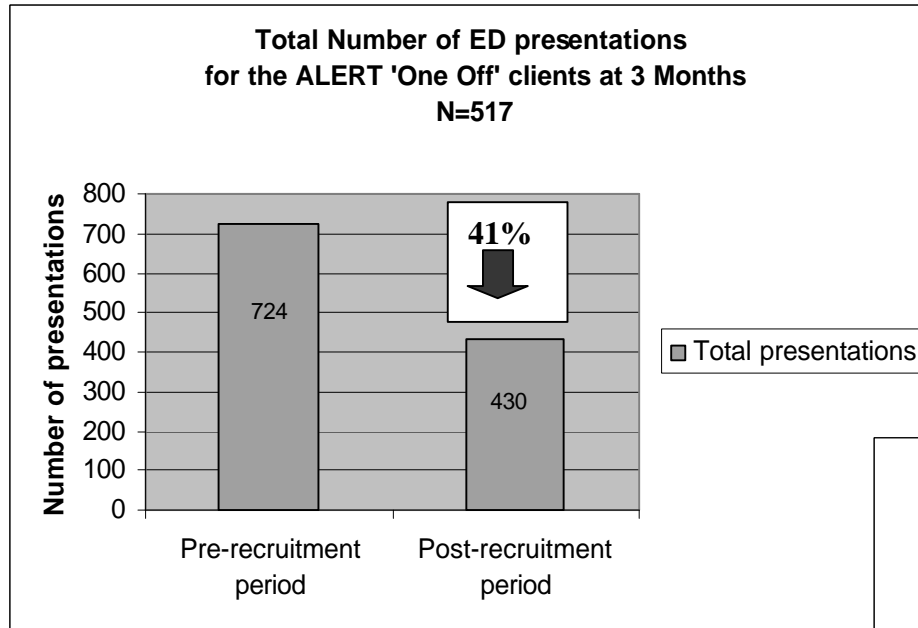
A snapshot of some key learning's



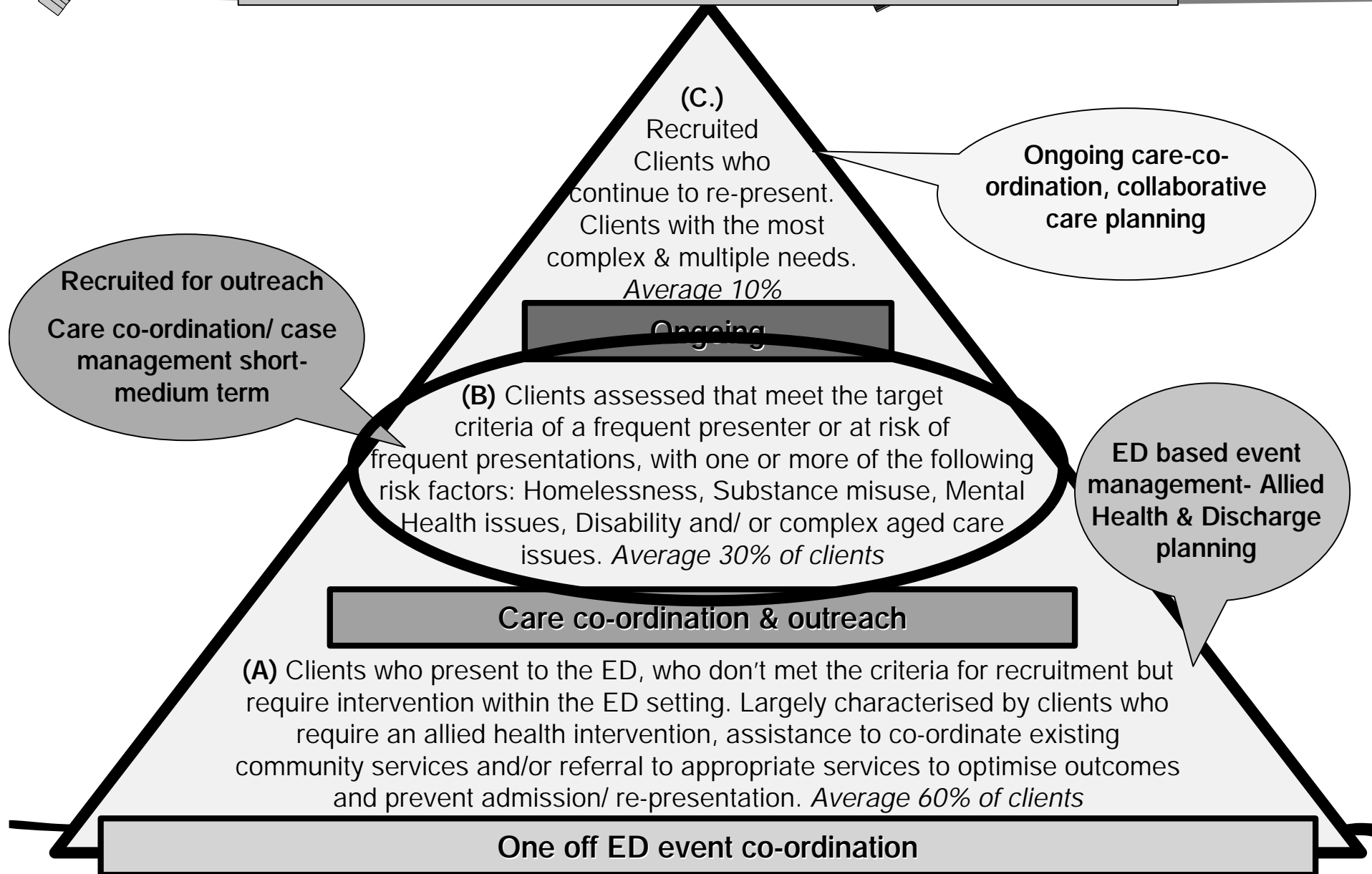
Appendix one: ALERT/HiT Clients



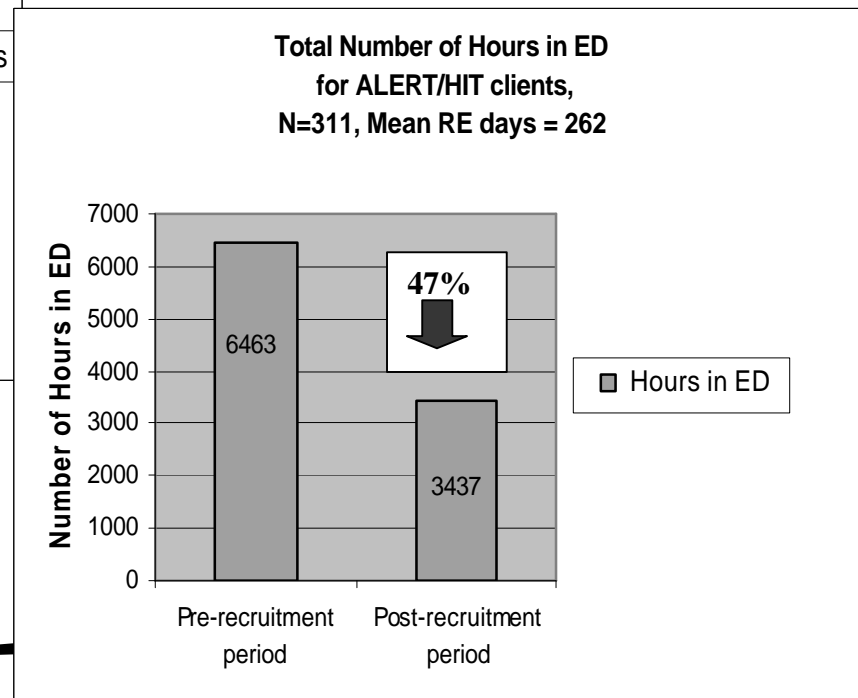
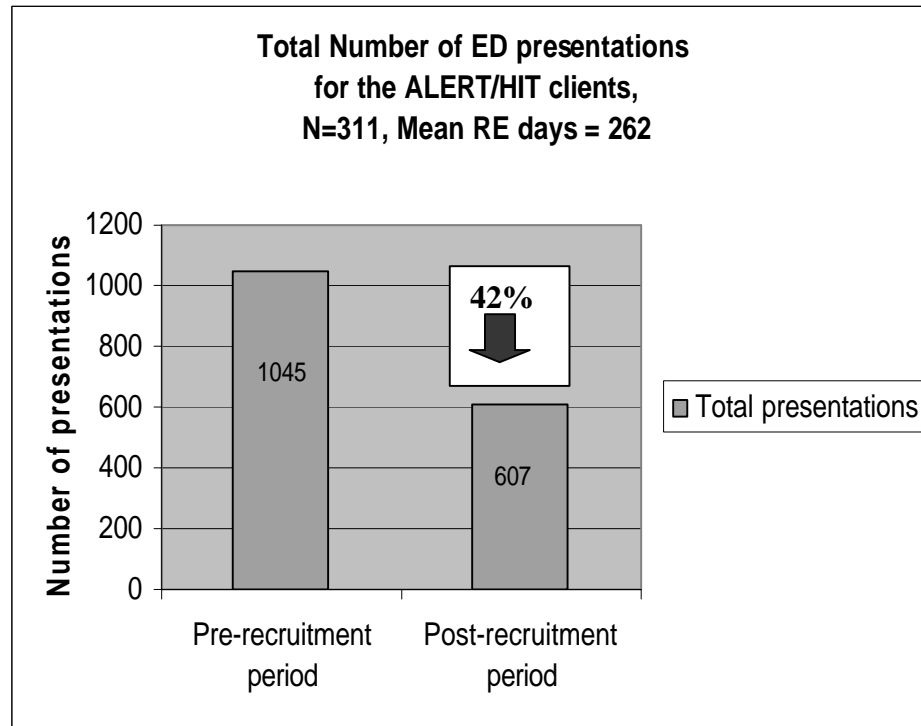
The evidence base



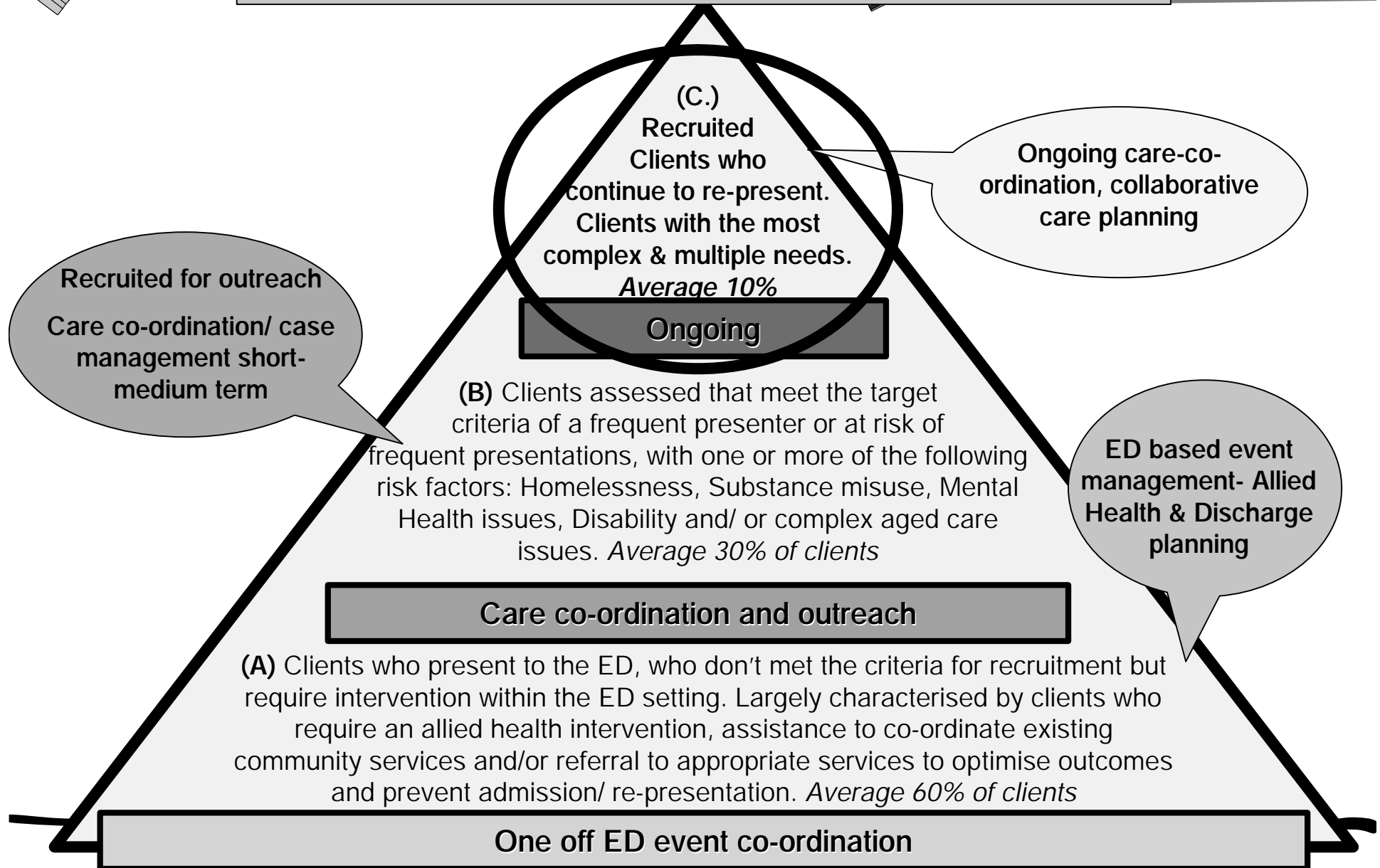
Appendix one: ALERT/HiT Clients



The evidence base




ALERT/HiT Clients





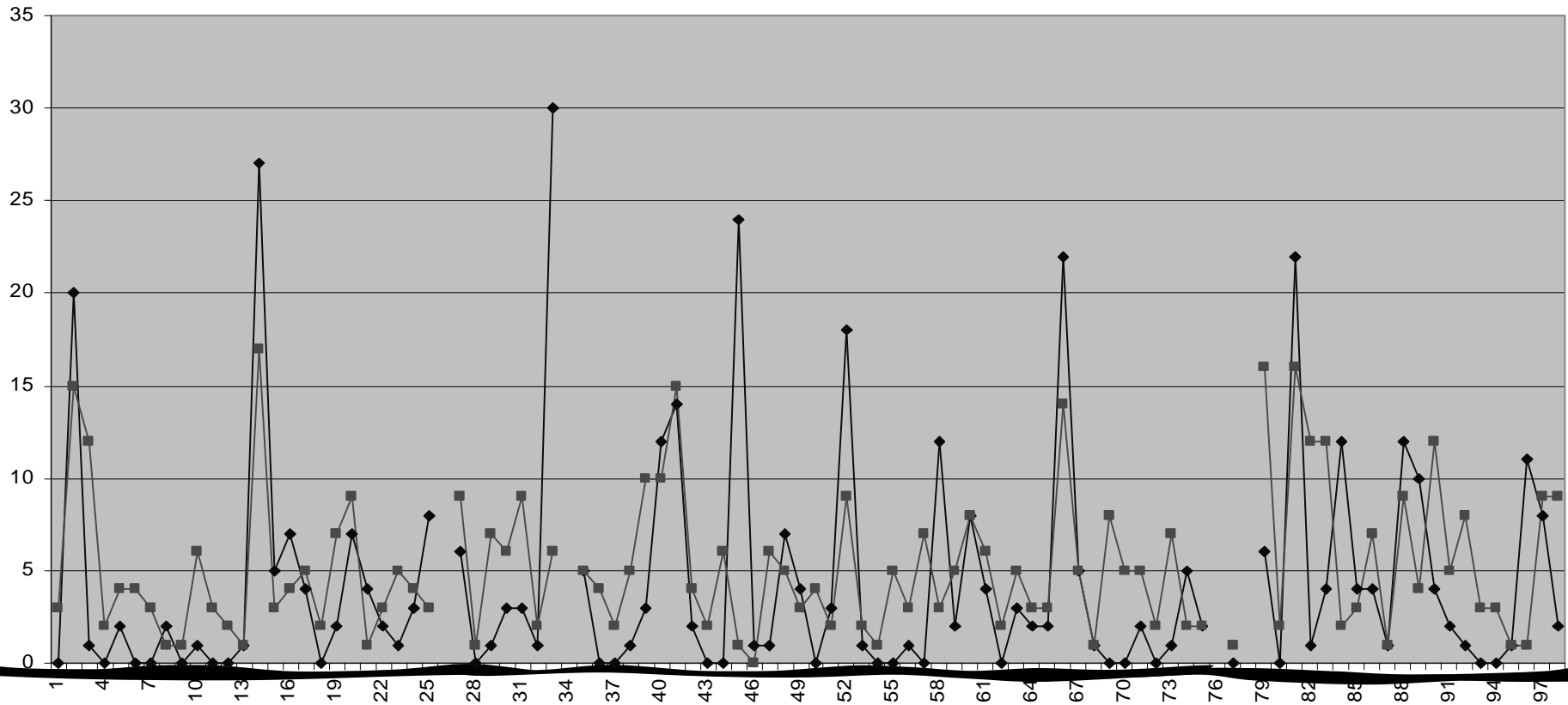
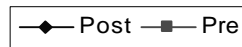
Research initiative

- ☛ All clients recruited to the program between Nov 02 and March 03
 - ☛ Track a year pre and a year post of Ed presentations, hours in ED and admissions
 - ☛ Data mining outlier cohort.
- 



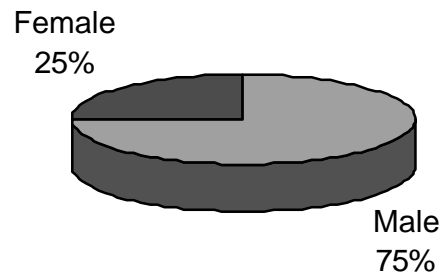
Initial findings

Number of ED presentation pre and post

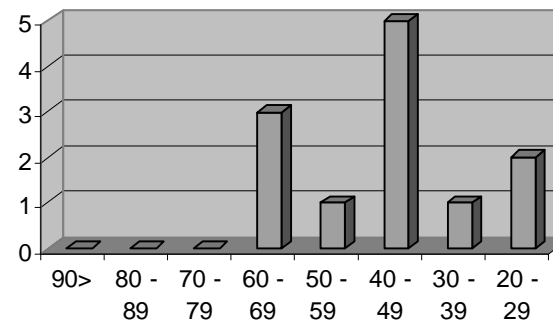


The 'outliers'

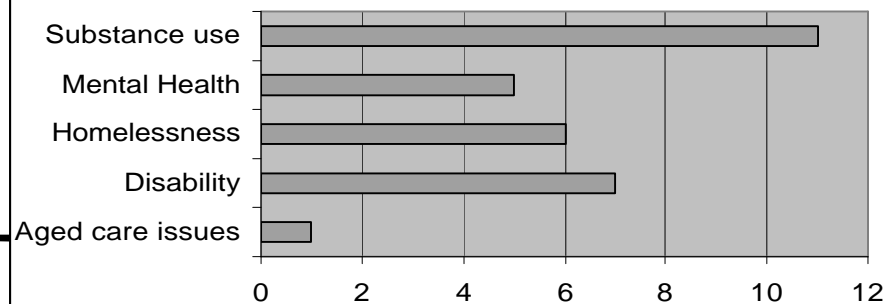
Gender distribution of outlier sub-group



Age distribution of outlier sub-group



Risk factor frequency distribution of outlier sub-group



The stats

	All Cases N = 94		Outliers Removed N = 82		Outlier Cases N = 12	
	test value	p value (2- tailed)	test value	p value (2- tailed)	test value	p value (2-tailed)
Length of Stay						
Paired t-test (t)	-.535	.594	-2.45	.016*	3.16	.009**
Signed Rank (Z)	-1.73	.083	-3.44	.001**	-2.83	.005**
Admissions						
Paired t-test (t)	-.285	.776	-5.16	.000***	3.57	.004**
Signed Rank (Z)	-2.25	.024*	-4.70	.000***	-2.94	.003**
Presentations						
Paired t-test (t)	-1.44	.154	-7.20	.000***	5.64	.000***
Signed Rank (Z)	-2.93	.003**	-5.88	.000***	-3.07	.002**
Hrs in ED						
Paired t-test (t)	-.974	.333	-5.82	.000***	5.60	.000***
Signed Rank (Z)	-2.59	.009**	-5.09	.000***	-3.06	.002**



Data Mining

- Multiple risk factors- Primarily alcohol
 - An average of 7 'other' services involved in care
 - Featured in service 'failures', refusers or did not engage
 - No GP's/GP or ED shopping
 - Chronic illness and ED role as primary service provider
-

Comparison data

	Clients recruited Nov 02- March 03 N=94		Clients recruited Jan 04-May 04 N=53	
	Test Value	P Value	Test value	P value
Length of Stay				
Paired t-test (t)	-.535	.594	1.93	.059
Signed Rank test (Z)	-1.73	.083	-3.56	.000**
Admissions				
Paired t-test (t)	-.285	.776	1.97	.054
Signed Rank test (Z)	-2.25	.024*	-3.99	.000**
Presentations				
Paired t-test (t)	-1.44	.154	1.99	.052
Signed Rank test (Z)	-2.93	.003**	-3.84	.000**
Hrs in ED				
Paired t-test (t)	-.974	.333	.062	.062
Signed Rank test (Z)	-2.59	.009**	.000**	.000**